

Mici a Mali



Tric  
a Chlic



Aeth Mici a Mali am dro.

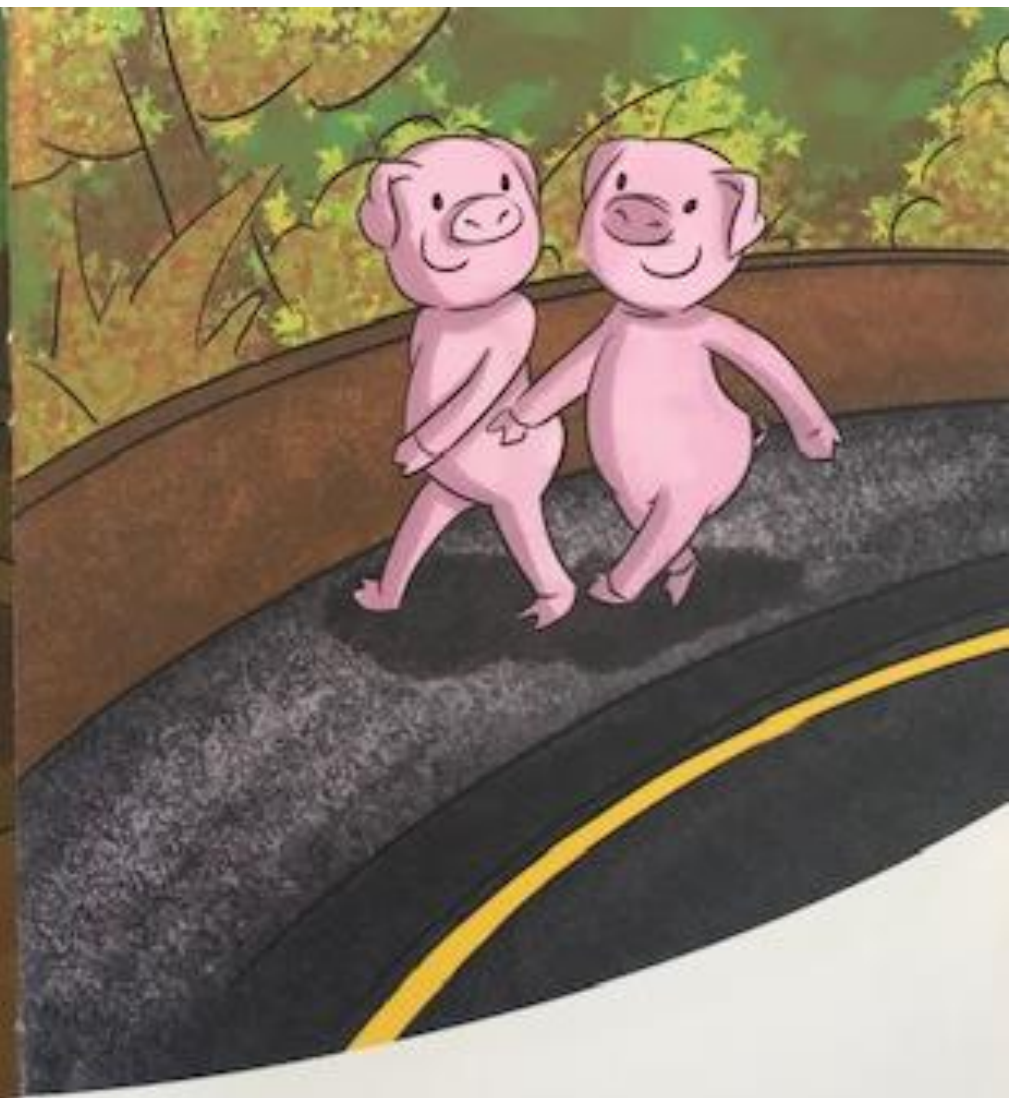


Aeth Mici a Mali ...





allan o'r twlc,



i lawr y ffordd,





at yr afon.



dros y bont



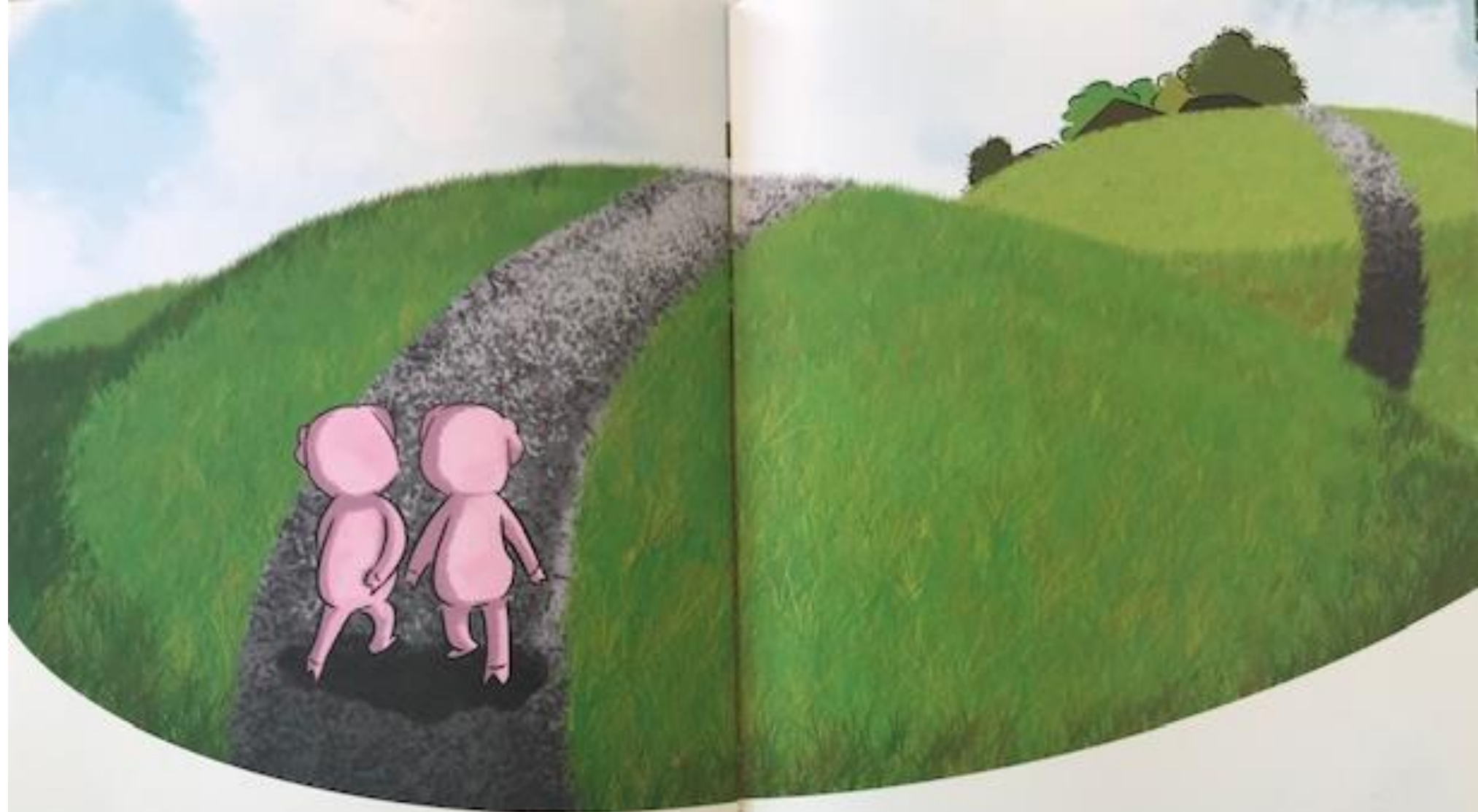


a thrwy'r parc.



Yna, nôl arian o'r banc.





lan y rhiw



ac



yn ôl i'r twlc  
ar y fferm.

